



**MAZENOD  
COLLEGE**

# Mazenod College Student Care & Support Flowchart

## Wellbeing Support Services

### College Psychologist

Referred by Head of Year

### Heads of Year

Wellbeing monitoring  
Case management

### Chaplain/Rector

Spiritual counselling and support

### Indigenous Liaison Officer

Cultural competence and support

### Director of Faith & Mission

Christian service opportunities  
Student ministry

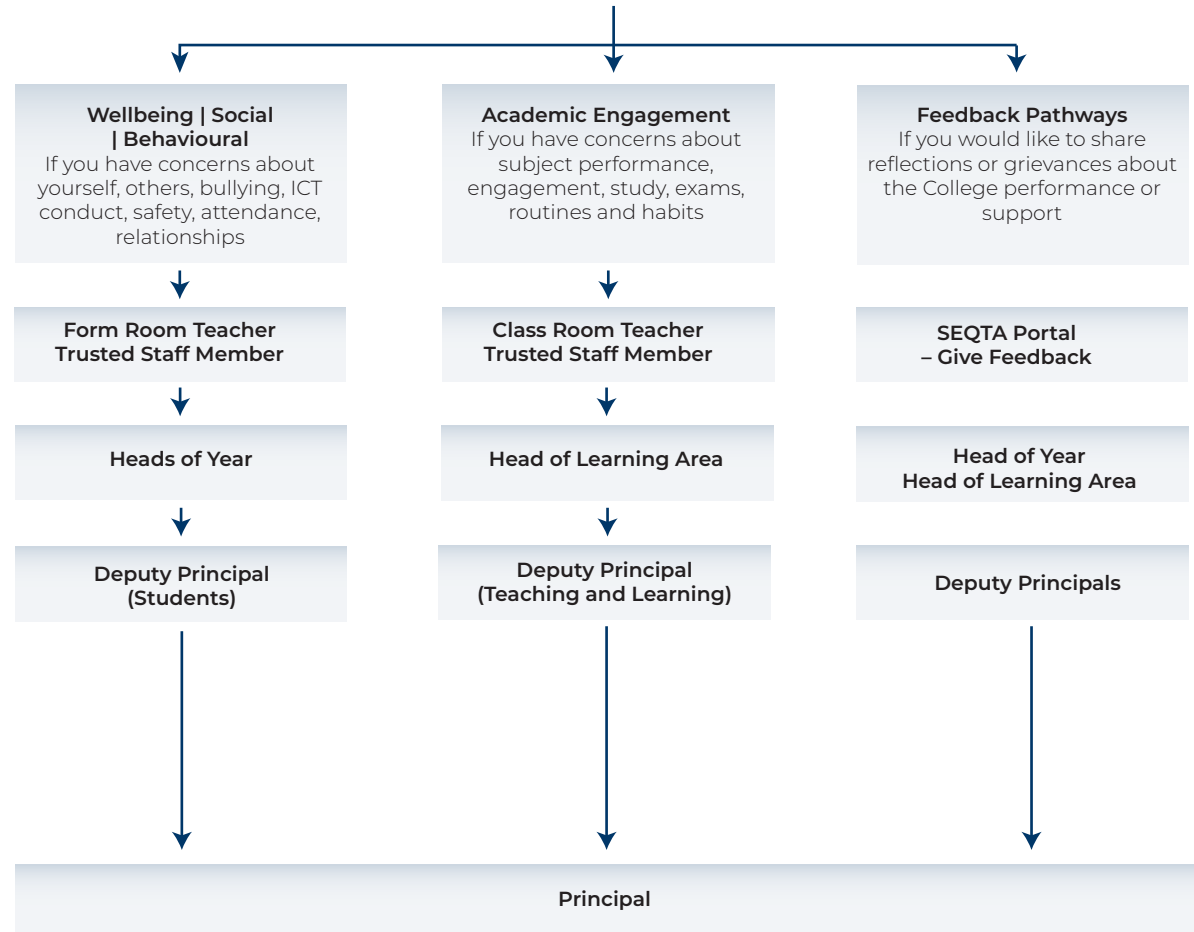
### Careers Team

Career pathway, MyPath &  
subject selection advice

### Director of Boarding

Care of all residential students

## Student Wellbeing



*LEARN WHAT YOU ARE IN THE EYES OF GOD*

The College Community is to be aware that staff will not be available to respond to emails or contact out of school hours.  
If there is a medical emergency, refer to the information below.